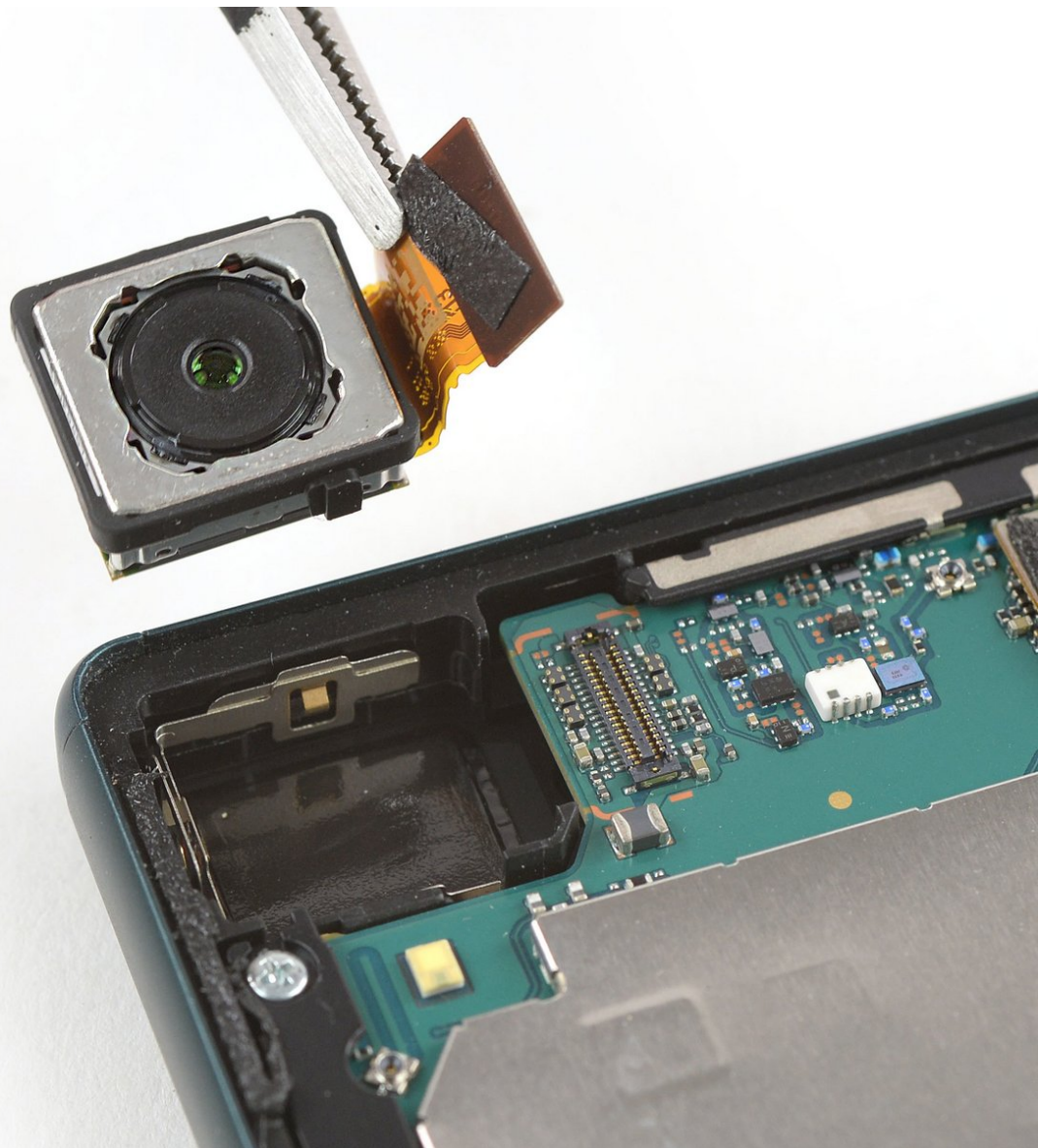




# Sony Xperia Z5 Rear Camera Replacement

How to replace a broken or defective rear camera in a Sony Xperia Z5.

Written By: Dominik Schnabelrauch



## INTRODUCTION

Use this guide to remove or replace a broken or defective rear camera in a Sony Xperia Z5.

If you do not replace the adhesive seals when reassembling, your device will function normally, but will most likely lose its water-protection.

You'll need replacement adhesive to reattach components when reassembling the device.



### TOOLS:

- [iFixit Opening Picks set of 6](#) (1)
- [Suction Handle](#) (1)
- [iOpener](#) (1)
- [Spudger](#) (1)
- [ESD Safe Tweezers Blunt Nose](#) (1)



### PARTS:

- [Sony Xperia Z5 Back Cover Adhesive](#) (1)
- [Sony Xperia Z5 Rear Camera](#) (1)

## Step 1 — Back Cover



- Before you begin, switch off your phone.
- Apply a [heated iOpener](#) to the edges on the back of the phone to loosen the adhesive beneath the rear glass. Apply the iOpener for at least two minutes.

## Step 2



- Secure a suction handle to the bottom of the rear glass, as close to the edge as possible.
  - Pull up the suction handle to generate a gap.
  - Insert an opening pick into the gap to further separate the rear glass from the phone assembly.
- ⓘ The adhesive of the Xperia Z5 is fairly weak and it is possible to remove the rear glass without the use of an opening pick. In case you're having trouble you can have a peek at the opening procedure of the [Xperia Z4](#).



## Step 3



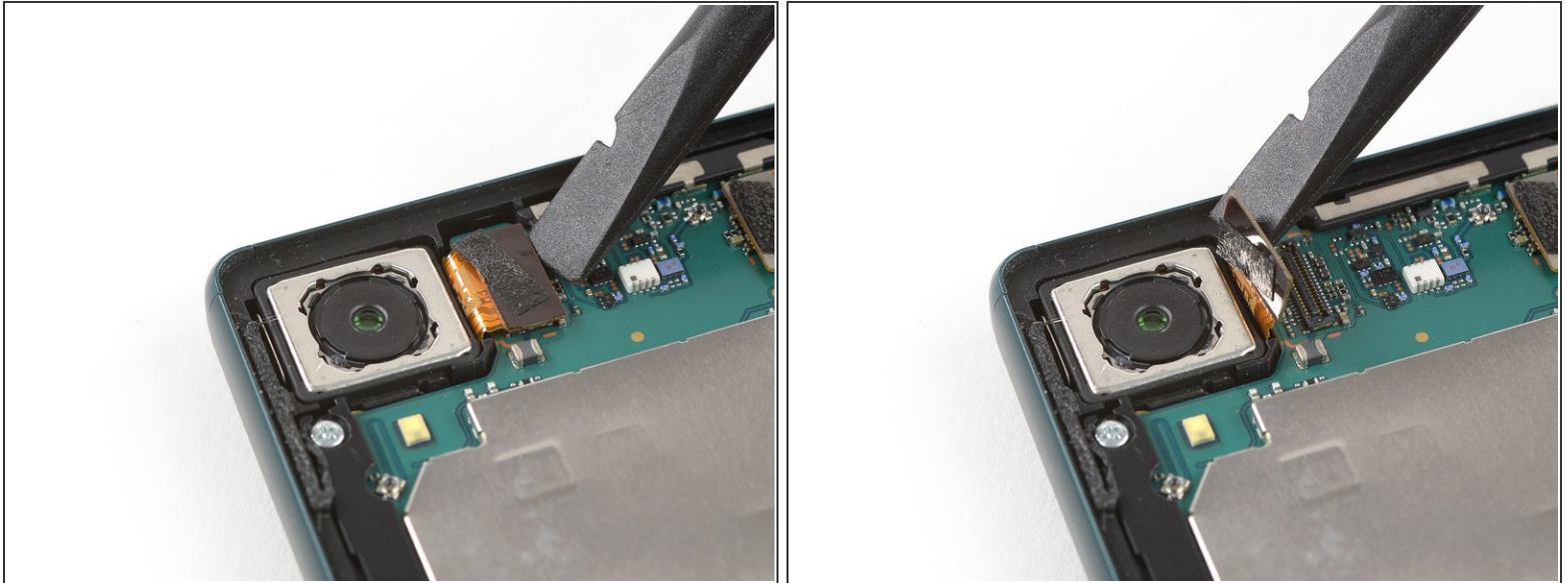
- Carefully lift and remove the rear glass.
- ☒ After installing the rear glass, apply strong, steady pressure to your phone for several minutes to help the adhesive form a good bond—a stack of heavy books works well.

## Step 4 — Battery Disconnect



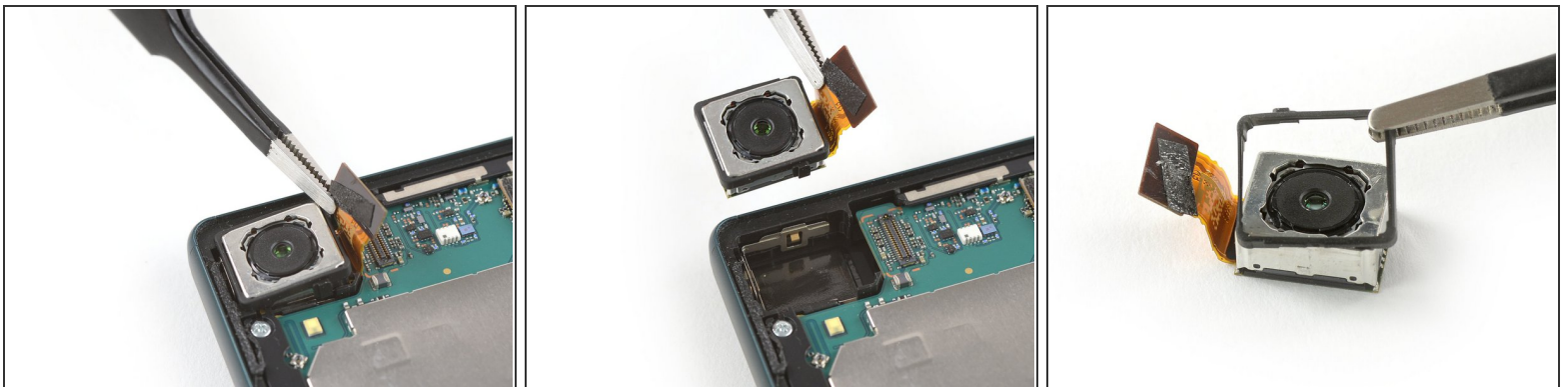
- Use a spudger to pry up and disconnect the battery flex cable.

## Step 5 — Rear Camera



- Use a spudger to pry up and disconnect the rear camera flex cable.

## Step 6



- Remove the rear camera with a pair of tweezers.
- ☑ Compare your new replacement part to the original part — you may need to transfer a rubber gasket to your new part before installing.

To reassemble your device, follow these instructions in reverse order.

Take your e-waste to an [R2 or e-Stewards certified recycler](#).

Repair didn't go as planned? Check out our [Answers community](#) for troubleshooting help.